

SixIntoSeven

from Pupil Pathways

Information for local authorities

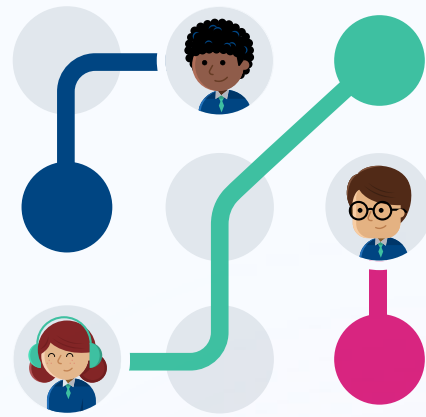
SixIntoSeven provides a secure, GDPR-compliant, consistent way for schools and local authorities to share and access comprehensive pupil information. In doing so, we enhance collaboration between schools and local authorities and help give every child the best start at secondary school.



How SixIntoSeven works

By facilitating the smooth, secure sharing of knowledge from feeder primary schools to the destination secondary schools, SixIntoSeven creates a personalised pathway for every child:

1. **Schools and Local Authorities agree which areas of information they wish to share**
2. **Primary schools add information to the secure, GDPR-compliant platform**
3. **Secondary schools receive a comprehensive profile for each child**
4. **Each child's transition needs can be met from day one**



How SixIntoSeven supports local authorities to deliver an enhanced transition for every child

- **Flexibility and localisation:** Choose whether to share transition data for one focus group, such as SEND or vulnerable pupils, or the entire cohort.
- **Breadth and depth of data:** Access data and insights via the LA Global Dashboard for every child who is, or will be, in the local authority's care.
- **Preventing children going missing in transition:** Quickly identify children without a destination secondary school, supporting the Children's Commissioner's objective to "provide greater oversight of pupil movement at the local authority level."
- **Working together to improve school attendance:** Detailed Y6 attendance data is available to secondary schools, supporting the DfE's statutory guidance.
- **Collaboration between local authorities:** Our "Lite" service allows the use of SixIntoSeven by OOA schools which send children to, or receive children from, schools in your borough.
- **Compatibility and GDPR compliance:** Pupil Pathways works seamlessly alongside all safeguarding platforms and MIS, and is fully GDPR compliant

Foresight

from Pupil Pathways

Information for local authorities

Foresight enables schools to work collaboratively with local authorities to help reduce suspensions and exclusions. Through access to high quality pupil information, schools and local authorities can easily identify pupils at risk of persistent absenteeism and proactively put early interventions in place to support vulnerable pupils.

How Foresight works

1. The school opens a new case, which is then sent to the LA with a request for further support. The LA has access to attendance and previous case notes.
2. The school is notified within Foresight of the support solution to be offered. Feedback is made through Foresight.
3. The school and LA can monitor attendance and any further incidents to assess the impact of the support solution.
4. The effectiveness of the support is reviewed, and decisions made are shared within Foresight.

How Foresight supports local authorities to improve attendance and reduce exclusions

- **The data follows the pupil:** All education and support specialists will have immediate access to complete case histories when pupils move to new schools.
- **Up to date information:** Pupil Pathways sync's with a school's MIS to ensure pupil information is as up to date as possible.
- **Keeping track of vulnerable pupils:** Foresight makes collaboration easier when a pupil moves to a new LA. This helps stop vulnerable pupils from slipping through the cracks.
- **Supports DfE statutory guidance on improving attendance:** Detailed attendance data including lates and unauthorised absences can be used to inform early intervention strategies for vulnerable pupils.
- **Reduces the data burden:** detailed pupil and cohort information is easily accessible in one digital platform, easing the data-burden and freeing up resource for proactively putting preventative measures in place.



How SixIntoSeven and Foresight work in tandem to create personalised pathways for transition and pupils at risk of exclusion

A **Transition Watch List** in **SixIntoSeven** flags pupils who are at risk of persistent absence based on their Y6 attendance records. This includes lates and authorised/unauthorised absences.



This detailed Y6 attendance information is available to secondary schools in **SixIntoSeven** before the summer break to enable early intervention and planning.



The information becomes available in **Foresight** at the start of the new academic year so that week by week or term by term data can be compared to identify issues as the child progresses through secondary school.

Find out more

Get in touch with the Pupil Pathways team at pupilpathways.com/contact to book a demo and to learn more about how we can support your local authority.

SCAN HERE

