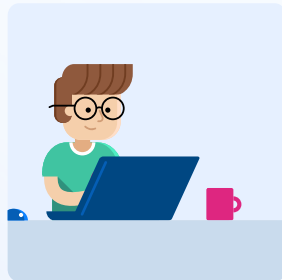


# SixIntoSeven

## from Pupil Pathways

### Information for schools

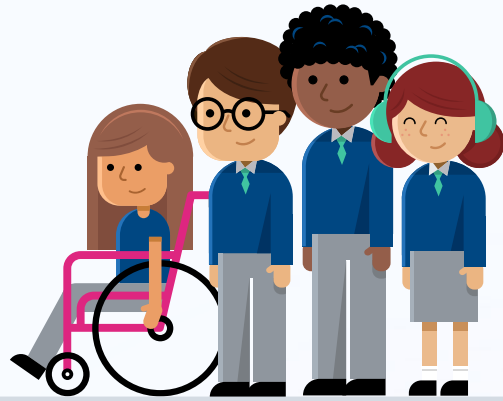
**SixIntoSeven** is dedicated to enhancing the transition experience for all pupils, extending beyond those identified as SEND or at risk, as they navigate the move from primary to secondary school. Through tailored, consistent and comprehensive data and information sharing, we help schools ensure that every child has the best start at secondary school.



#### How SixIntoSeven works

By facilitating the smooth, secure sharing of knowledge from feeder primary schools to the destination secondary schools, SixIntoSeven creates a personalised pathway for every child:

1. Schools and Local Authorities agree which areas of information they wish to share
2. Primary schools add information to the secure, GDPR-compliant platform
3. Secondary schools receive a comprehensive profile for each child
4. Each child's transition needs can be met from day one



#### How SixIntoSeven supports schools to deliver an enhanced transition for every child

- **A streamlined, consistent process:** Schools within a local authority use the same system for sharing transition information. This means that primary schools only have one system to use and the secondary schools only one set of data to analyse.
- **A detailed pupil profile:** A wide range of information in different formats can be uploaded to the platform, including spreadsheets, care plans, flags and voice notes, to provide a complete picture of a pupil's needs.
- **Early information supports early intervention:** Detailed information for SEND and vulnerable pupils can be provided by the primary school well in advance of transition, enabling the secondary school to give pupils the best start in September.
- **Working together to improve attendance:** Primary schools can flag pupils at risk of persistent absence based on their Y6 attendance record. This is shared with the destination secondary school before the summer, so that attendance plans can be put in place.
- **Compatibility and GDPR compliance:** Pupil Pathways works seamlessly alongside all safeguarding platforms and MIS, and is fully GDPR compliant.

# Foresight

## from Pupil Pathways

Information for schools

**Foresight** enables schools to work collaboratively with local authorities to help reduce suspensions and exclusions. Through access to high quality pupil information, schools can easily identify pupils at risk of persistent absenteeism and proactively put early interventions in place to support vulnerable pupils.

### How Foresight works

1. The school opens a new case, which is then sent to the LA with a request for further support. The LA has access to attendance and previous case notes.
2. The school is notified within Foresight of the support solution to be offered. Feedback is made through Foresight.
3. The school and LA can monitor attendance and any further incidents to assess the impact of the support solution.
4. The effectiveness of the support is reviewed, and decisions made are shared within Foresight.

### How Foresight supports schools to improve attendance and reduce exclusions

- **Collaboration:** Foresight provides a single, secure, streamlined system for education and support specialists to share information, track a pupil's progress and understand the next stages in their support.
- **Detailed attendance data at your fingertips:** All users can view detailed attendance data including lates and authorised/unauthorised absences. This can be used to inform early intervention strategies for at-risk pupils and support the DfE statutory guidance on improving attendance.
- **Consistency:** Foresight provides a consistent framework for the collection and analysis of pupil cases. This supports schools to prioritise different cases in order to effectively allocate resources.
- **The data follows the pupil:** A complete case history of attendance, suspensions, exclusions and support patterns is provided to aid decision making. This is immediately accessible when a pupil moves to a new school.
- **Up to date information:** Pupil Pathways sync's with the school's MIS to ensure pupil information is as up to date as possible.



### How SixIntoSeven and Foresight work in tandem to create personalised pathways for transition and pupils at risk of exclusion

A **Transition Watch List** in **SixIntoSeven** flags pupils who are at risk of persistent absence based on their Y6 attendance records. This includes lates and authorised/unauthorised absences.



This detailed Y6 attendance information is available to secondary schools in **SixIntoSeven** before the summer break to enable early intervention and planning.



The information becomes available in **Foresight** at the start of the new academic year so that week by week or term by term data can be compared to identify issues as the child progresses through secondary school.

### Find out more

Get in touch with the Pupil Pathways team at [pupilpathways.com/contact](https://pupilpathways.com/contact) to book a demo and to learn more about how we can support your school.

SCAN HERE

