

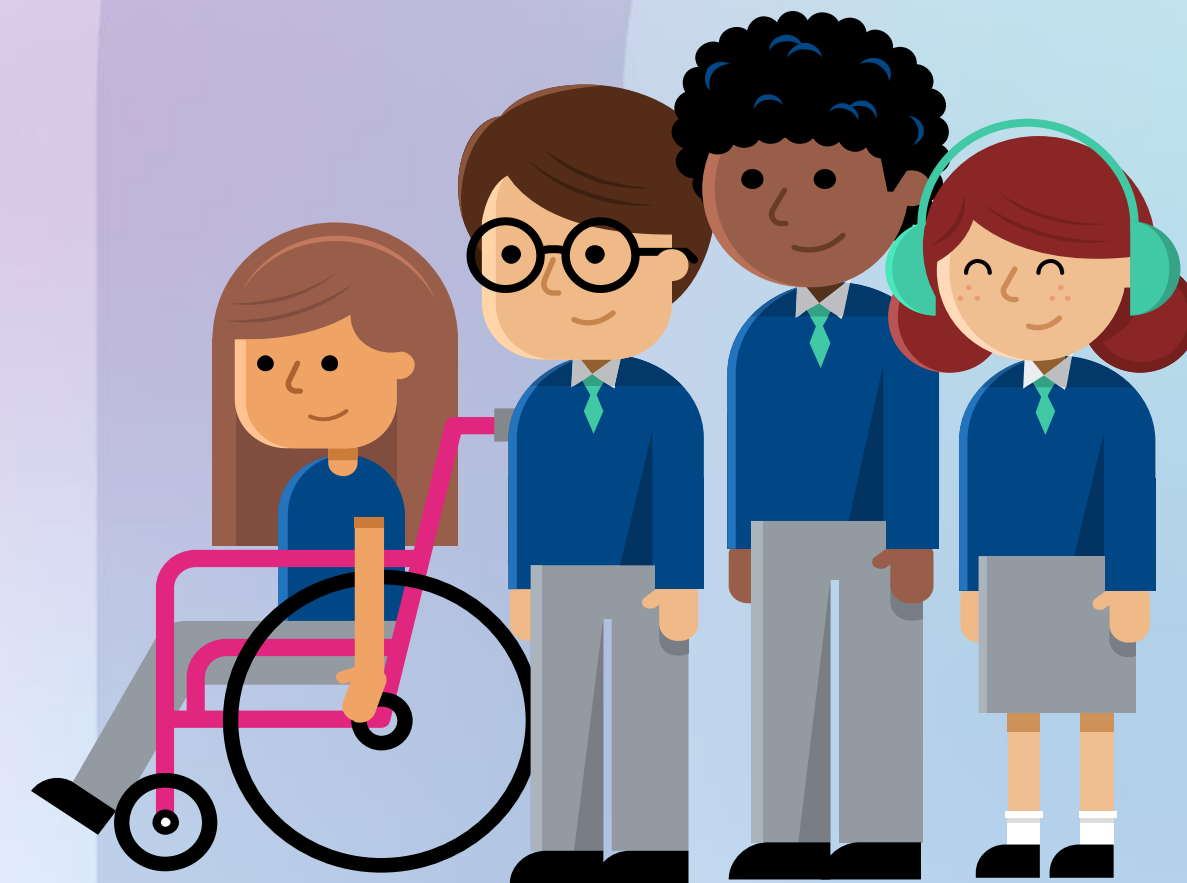
# Introducing **SixIntoSeven Lite**

A free-to-use platform to help Partner Local Authorities support transition

# What is a Pupil Pathways Partner Local Authority?

A Partner Local Authority (PLA) is a Local Authority (LA) which does not have a SixIntoSeven contract for managing primary to secondary transition but interacts with an LA which does. This could be either sending pupils to a SixIntoSeven secondary school, or welcoming pupils from a SixIntoSeven primary school.

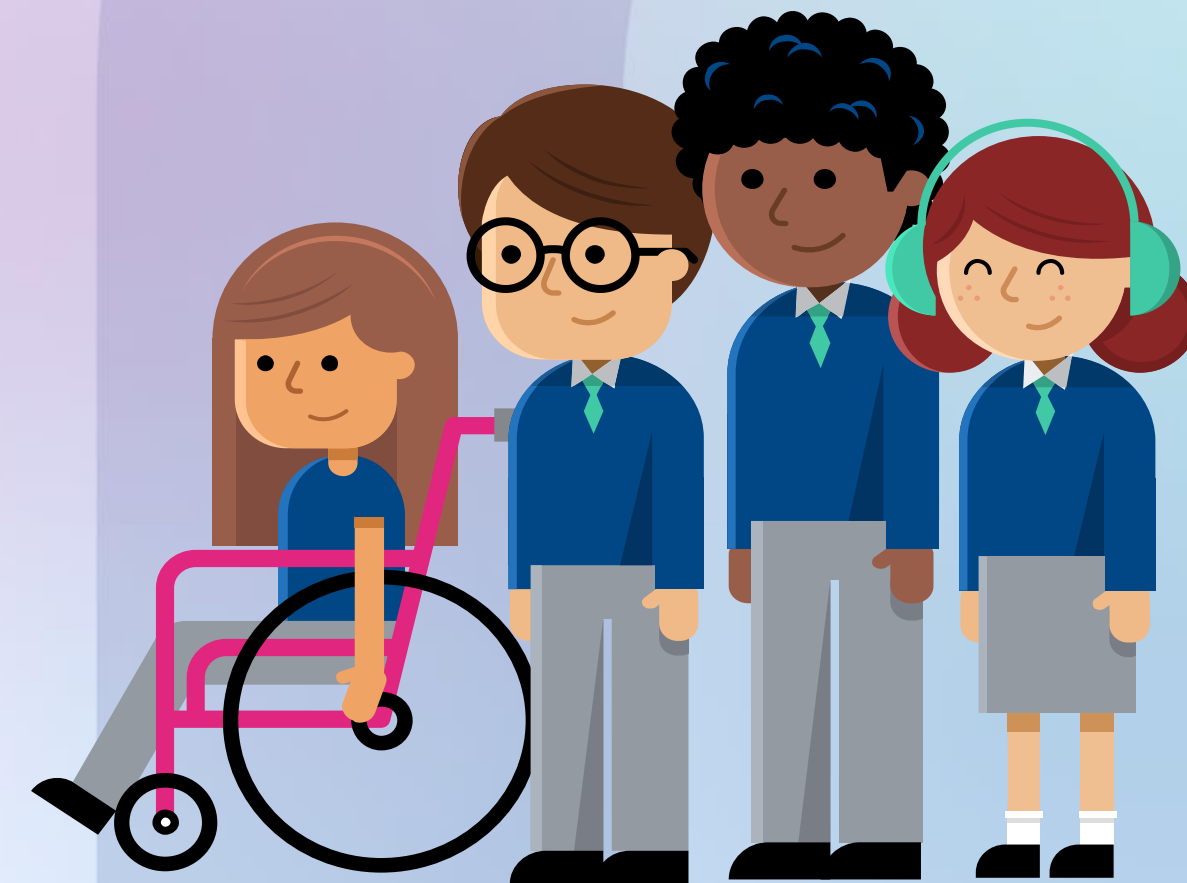
We believe that in both these cases, the pupils should enjoy the benefits of SixIntoSeven and we have therefore developed our free-to-use SixIntoSeven Lite service.



# How does SixIntoSeven Lite work for primary schools?

For **primary schools** in Partner LAs sending children to secondary schools in LAs that use SixIntoSeven:

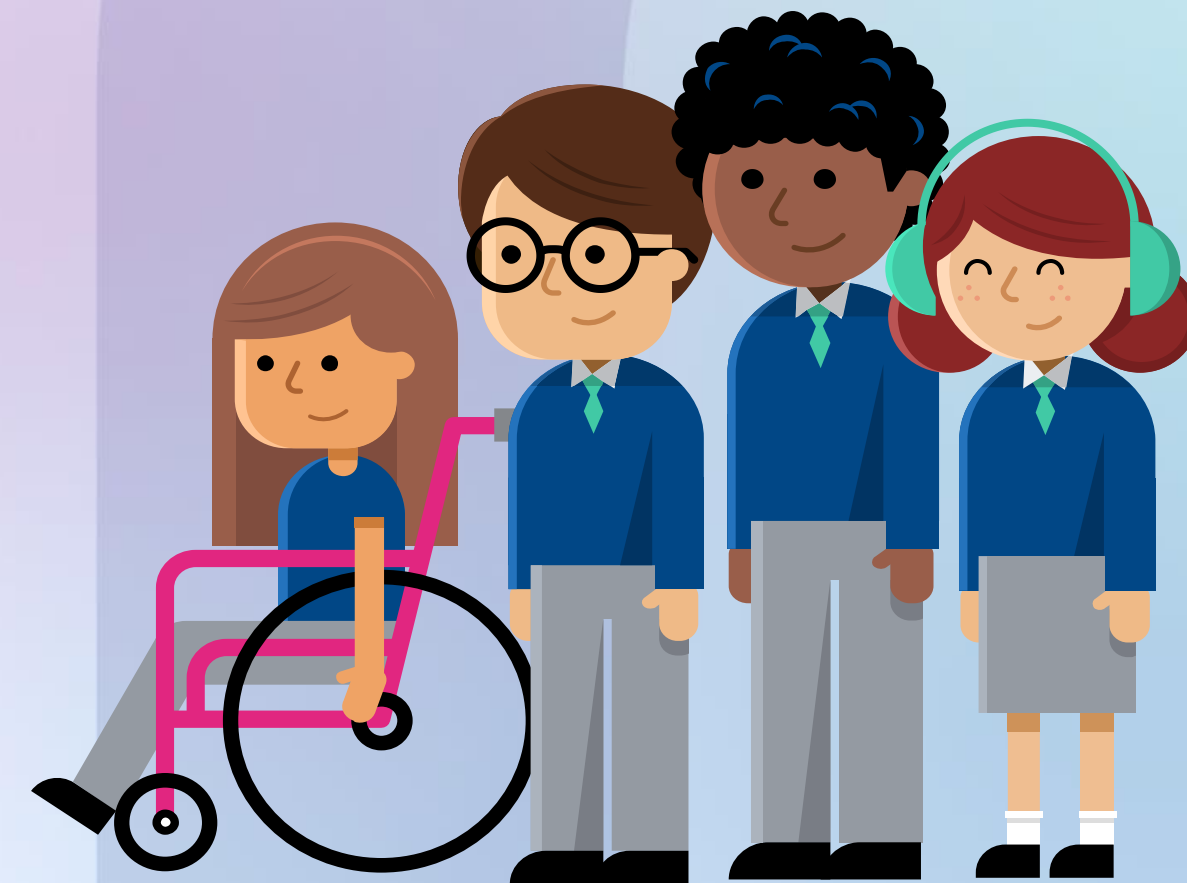
- ▶ The primary school receives an invite to join SixIntoSeven Lite from a SixIntoSeven secondary school who is receiving one or more of their pupils
- ▶ The primary school creates a free SixIntoSeven Lite account and will then be able to upload all the transition information for the pupil(s) This can include documents such as EHCPs, attendance records and other statements.
- ▶ The destination secondary school has immediate access to this information once uploaded to SixIntoSeven Lite



# How does SixIntoSeven Lite work for secondary schools?

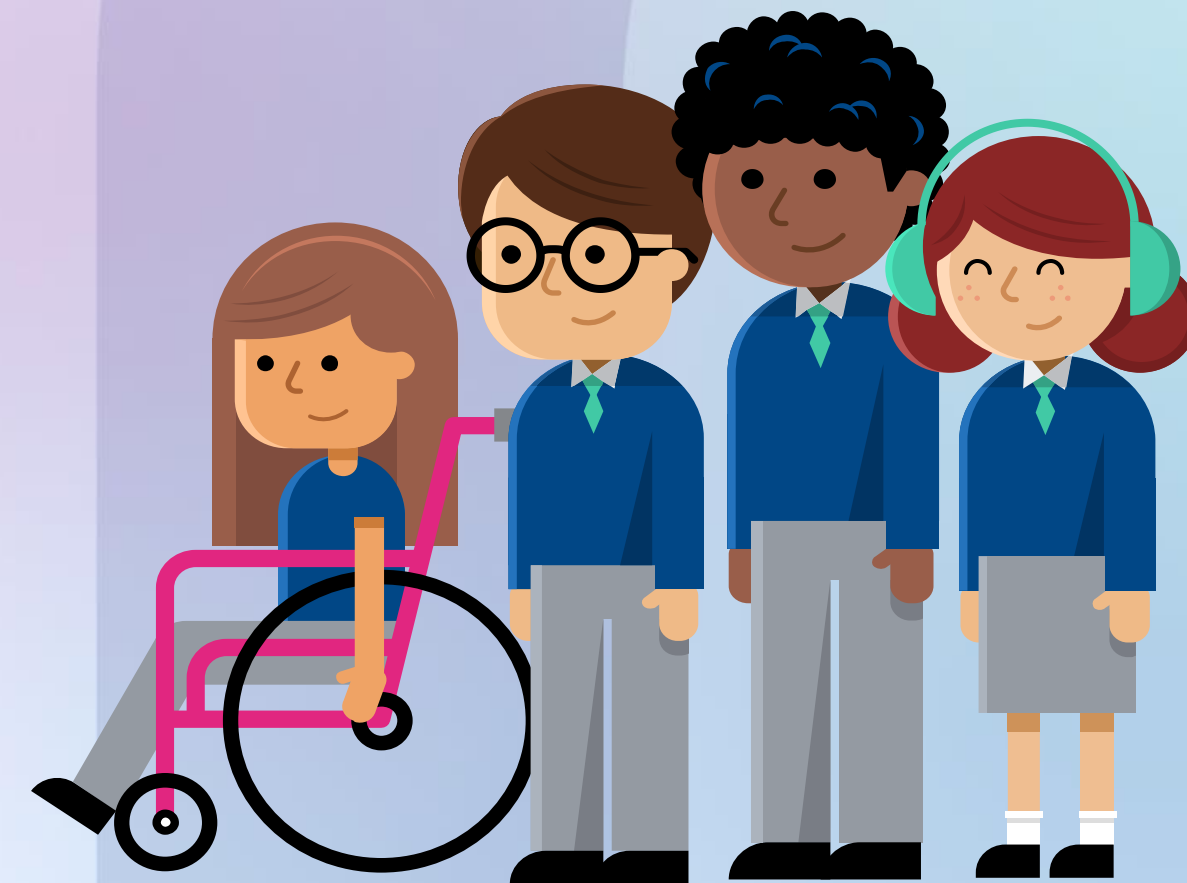
For **secondary schools** in Partner LAs receiving children from primary schools in LAs that use SixIntoSeven:

- ▶ The secondary school receives an invite to join SixIntoSeven Lite from a SixIntoSeven primary school who is sending one or more of their pupils
- ▶ The secondary school creates a free SixIntoSeven Lite account and will then be able to view detailed transition information for the pupil(s)
- ▶ The destination secondary school has immediate access to this information once uploaded to SixIntoSeven Lite, which can be used to enable planning ahead of transition taking place



# How SixIntoSeven Lite supports transition: benefits for schools

- ▶ **GDPR compliance:** primary schools can be confident that the data they share will be through a GDPR-complaint service which includes all legal documentation.
- ▶ **Continuation of care:** minimises the risk of SEND and vulnerable pupils being missed or the destination secondary schools not having the pupil's full information
- ▶ **Early intervention:** pupil information entered into SixIntoSeven Lite is immediately available to the destination secondary school, enabling support to be put in place ahead of September





# How SixIntoSeven Lite supports transition: benefits for LAs

- ▶ **Full oversight of the transition cohort:** colleagues within the PLA will be able to access a summative dashboard showing all the pupils moving into and out of their authority and transferring to a SixIntoSeven LA.
- ▶ **Track and support vulnerable pupils:** In most cases, PLAs will be able to identify pupils with specific characteristics such as SEND and LAC as well as attendance records. It is important to note that this information will only be available to PLAs if their schools have registered for SixIntoSeven Lite

